



HOPE

Has a New Name

2021 Annual Report

192 YEARS

1829 – 2021

Igniting Hope.

Changing Futures.

A LETTER FROM THE CEO AND BOARD CHAIR



It has been an exciting year at NewPath Child & Family Solutions (formerly St. Joseph Orphanage). The successful launch of our new branding allows us to reflect our current mission better while honoring our heritage. However, this rebrand was more than just a simple design and name change. We continuously

pivot our organizational structure to meet the growing demands as the mental and behavioral health landscape intensifies. Through implementing these recent strategic efforts, we can continually adapt to the ever-changing needs of the children and families we support. These new integrations align with our commitment to the community as a premier behavioral health, specialized education, and child welfare agency.

In 2021 we reached thousands of children and families in our community:

11,000+ Children & Family Members Supported
29,472 Telehealth Appointments

Partnered with financial support from our community, our dedicated team provided opportunities for sustainability and growth while helping us fulfill our mission: **Igniting Hope. Changing Futures.** The unwavering support from family and private foundations, corporate partners, donors, and volunteers helped us extend our therapeutic healing to those in need. Through the generosity of donors, NewPath received \$1.2M in charitable gifts in support of our facilities and services. Your continued commitment to the children and families we serve is greatly appreciated.

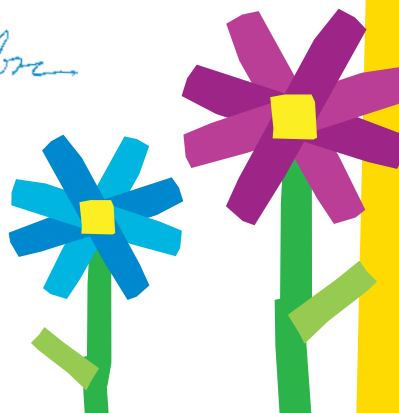
Finally, we would like to extend a word of thanks to our outstanding Board of Directors (see sidebar), Executive Leaders, and all of NewPath's team members. Each of you continues to go above and beyond to meet the ongoing needs of our community through our Continuum of Care: Specialized Education, Foster Care, Independent Living, Medical, Outpatient, and Residential Interventions.

Our goal is to expand our capacity, further reimagining how we meet the needs of children and families we serve each day. Driven by our Guiding Principles: Empowerment, Empathy, Creativity, Determination, and Collaboration, we will continue to bring excellence to the breadth of services we provide to our community.

Sincerely,

ERIC CUMMINS,
CEO

MICHAEL T. LAROSA,
Board Chair



Board Officers

Michael T. LaRosa, *Chair*
LaRosa's, Inc.

Joseph W. Luria, *Vice Chair*
Cincinnati Children's Hospital
Medical Center

Toni C. Otchere, *Secretary*
Provision Enterprise LLC

Ryan M. Kilpatrick, *Treasurer*
GBQ Partners

Board Members

Daniel E. Burke
Graydon

Stephanie M. Coffaro
Anchor For Hope Foundation

Aimee N. Cordrey
UC Health

Michael G. Dailey
Dinsmore

David R. Deger
Deger Consulting, LLC

Sister Mary Catherine Faller, SC
Sisters Of Charity

Carolyn L. Jones
Hamilton County Mental Health &
Recovery Services Board (Retired)

Kevin R. Kane
Journey Advisory Group

William J. Laverty
Partner Professional Staffing

D. Nick Lien
UKG

Regina M. Marek
RMM Consulting, LLC

Donald E. Olinger
Totes-Isotoner (Retired)

Jennifer A. Sherwood
Bank Of America Private Bank

Billy Southerland
Ironroad

Greg E. Tankersley
Becker Engineered Systems

Thomas E. Uhl
NPA Realty Group

Emeritus Board Members

James D. Redmond
Oracle Corporation (Retired)

Nicholas C. Reilly
Constellation Wealth Advisors

Daniel G. Spraul
Spraul & Doan, LLC

STRATEGIC PLANNING

Agency Goals FY22

AGENCY PLANNING

We will ensure a superior customer service experience for all NewPath community members.

HEALTHY SERVICES

We will meet clients where they are.

QUALITY PEOPLE

We will attract, support, develop, and retain high quality employees.

SUSTAINABILITY

We will provide services at a level of care leading to the financial sustainability of all service lines.

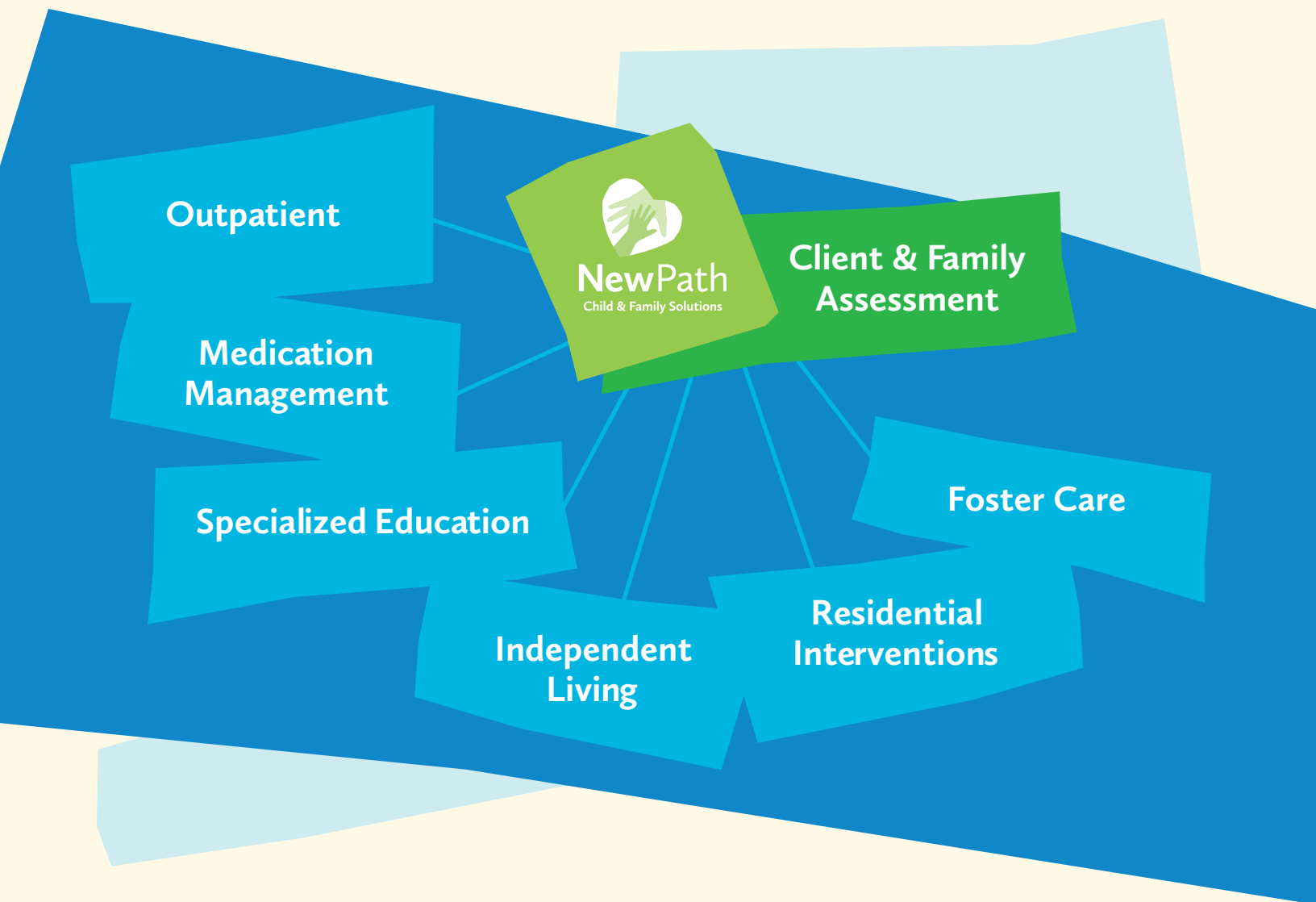
CULTURAL COMPETENCY

We will be a culturally competent organization for all NewPath members.

CONTINUUM OF CARE

There is hope. There is help.

NewPath Child & Family Solutions is a premier behavioral health, specialized education and child welfare agency that does more to make a difference—more for each child, each client and our community. Backed by a full breadth of services, we get to the heart of every case and deliver the best opportunity for change. **Every program improves lives, and every person ignites hope, one success story at a time.**



BY THE NUMBERS

Operating Budget

\$23,654,167

Clients Served

3,676

Foster Youth Served

86

Telehealth Appointments

29,472

Residential Interventions

75

Medical Appointments

9,923

Foster Youth Placements

56

Students Enrolled in Our Schools

168

Elementary

88

High School

80

A NEW IDENTITY FOR AN OLD FRIEND

For over 190 years, NewPath Child & Family Solutions (formerly St. Joseph Orphanage) has responded to the changing needs of children and families in our community. Kate Burkhardt, Marketing Manager, who led the rebranding initiative, stated, “We needed the alignment with our name to be representative of the amazing services we provide, what it is we actually do while still connecting to our profound heritage.”

NewPath is a positive source of renewal, where children and families turn to recover and rebuild in the aftermath of traumatic situations. We help clients build resilience and the inner power they need to grow toward and prepare for the future.

How We Accomplish This

As a premier behavioral health, specialized education, and child welfare agency, we offer a continuum of care to do more to make a difference. We do more for each child, each client, and our community. Backed by a full breadth of services, we get to the heart of every case and deliver the best opportunity for change.

Igniting Hope. Changing Futures.

Our dedicated team does what it takes, day and night, to get to the heart of every case and deliver the best care. We cater to each individual and answer every need. We reach more ages with more experts for more results. Every program offers the opportunity for change, every plan improves lives, and every person ignites hope, one success story at a time.

Our Guiding Principles

- **EMPOWERMENT:** Every client can succeed, and we are partners and guides on their journey to healing.
- **EMPATHY:** Every story is unique, and we meet clients where they are.
- **CREATIVITY:** Our clients deserve a unique approach, and we are continually investigating new strategies and solutions.
- **DETERMINATION:** We believe in our clients and their families, refusing to give up in the face of challenges.
- **COLLABORATION:** We believe in collaborative approaches for holistic care, involving a team of treatment providers, family and community members, and our clients.

Reflection from a Leader in Marketing

“After launching our rebranding initiative and transitioning from St. Joseph Orphanage to NewPath Child & Family Solutions, I could not be prouder of the extensive research and collaboration that launched a brand representative of who we are and what we do. We knew our rebranding initiative would be a large undertaking with nearly two centuries of helping children and families. What was once an orphanage founded in 1829 has evolved into an innovative agency with a strong connection to our heritage and history. Our brand aligns us for the future and is one our team, children, families, and neighbors can be proud to have in the community.”

— Kate Burkhardt, Marketing Manager

Kate Burkhardt & Madison Design Team




DEI INITIATIVE: OUR COMMITMENT TO CARE

Like many organizations, our agency is still pivoting in reaction to the global pandemic and its effects on the mental health, education, and child welfare industries. We have reimagined our leadership structure to better support children and families today, tomorrow, and in the future by taking a progressive stance on positioning ourselves for growth. By consolidating positions with the addition of a Chief Impact Officer to the Executive Team, we emphasized experience for both our internal and external stakeholders. With the goal of excellence, NewPath continues to strive to be the best place to work, receive care, and invest one's time and treasure as we further continue **Igniting Hope. Changing Futures.**

To achieve excellent experiences for our stakeholders, we must stay committed to **Diversity, Equity, and Inclusion**

(DEI) and all belonging efforts. First and foremost, we recognize that this is more than a business practice; **this is about people.** Therefore, we continue to generate best practices that encompass humanity, not just return on investment. As an agency, we will lean into our commitment to DEI with every decision to address our blind spots, seek diversity in all variations, empower authenticity, and equally important, hear everyone's voice and value their unique perspectives both internally and externally.

We are excited about the direction of NewPath and look forward to experiencing the value this reimagined approach will bring to our agency and those we serve.



“As an agency, we will lean into our commitment to

DEI with every decision to address our blind spots, seek diversity in all variations, empower authenticity,

and equally important, hear everyone's voice and value their unique perspectives both internally and externally.”

CLIENT SUCCESS STORIES

Hannah/My First Place

Hannah lived with her three siblings and grandmother after her removal from her parents' care by Hamilton County Children's Services. "Practically my entire childhood was filled with neglect and abuse from my parents," said Hannah in an interview.

This new arrangement for Hannah and her siblings lasted for several years until her grandmother couldn't take care of them anymore. Hannah has a disorder known as Fragile X Syndrome. This genetic condition causes developmental delays, such as learning disabilities and cognitive impairment. As Hannah neared 18, she worried about her next steps once she aged out of foster care.

Thankfully, Hannah joined NewPath's My First Place program, and her future began to look brighter. When asked about how it felt to join the program, she said, "I was like, this is going to be a huge turning point in my life. And it has." With the support of NewPath, she is on track to finish high school on time and join a workforce training program after graduation.

"With a scale of 1 to 10 to recommend this to other kids, I would do a 10," said Hannah about NewPath and My First Place. "Because this program does everything that they can for the kids that's just new on their own. They didn't have a childhood as they wanted. And the program will do everything they can to meet the child's needs."

According to First Place for Youth statistics, more than 25,000 foster youth are transitioning into adulthood each year.

My First Place and NewPath work hard to maintain a program that builds hope and develops the social tools and skills foster youth need for successful adult life. Since this program's beginning in 2019, **67% of participating clients found stable housing**, and **56% are employed**. The success of this program and the number of young adult participants have continued to grow each year.

Jayvion/Residential Interventions

Jayvion joined NewPath's Residential Intervention Services two years ago due to behavioral concerns brought on by a traumatic past. Finding Jayvion a placement he could call home proved difficult because of how his diagnosis read on paper. After years of searching, our NewPath Team placed him in a loving environment to help him continue his healing journey. Before being discharged from NewPath's care, Jayvion had the opportunity to fly to Miami, FL, and meet his new foster dad and family. NewPath still receives updates on Jayvion's growth and progress. He is making excellent grades and playing on his school's basketball team.

James/Residential Interventions

James was in and out of NewPath's Residential Intervention Services three times to find his healing path toward a brighter future. Each time James arrived at NewPath, he worked hard with our team to overcome the traumas from his past. In his third and final time with Residential Interventions, James overcame his trauma-induced behavioral obstacles. He had the opportunity to help out at a local auto body shop and discovered a passion for working on cars. James now stays at the Job Corp, located in Cincinnati, and is training in their auto body program toward becoming a licensed mechanic.

Out of 25,000 foster youth transitioning into adulthood each year:

40%

will experience homelessness by the age of 24

25%

will be arrested or incarcerated

20%

will not obtain a high school diploma or GED

Fewer than

5%

will earn a bachelor's degree

EMPLOYEE RECOGNITION

35+ years of service

Bruce Reardon

30+ years of service

Donald Evans
Valerie Thomas

25+ years of service

Christa Brady
James Fletcher
Amy Jolivette
Diane King
Susan Vonderhaar

20+ years of service

Dorothy Bayless
Regina Chenault
Jada Davis
Carolyn Flynn
Heidi Gorney
Lisa Greenwell
Dana Kapiotis
Sherry Thompson
Ella Washington

15+ years of service

Denise Beberstein
Randy Bell
BJ Bowers

David Campbell

Jean Combs
Mary Freeman
Joy Johnston
Molly Kirchner
Donald Kuchey
Jessica Neulman
Chanda Pearil
Margaret Rosa
Mary Steele
Angela Storms
Mykish Summers
Betty Terrill
Esther Urick

10+ years of service

Brandy Desenberg
Deloys Garrett
Thomas Harsha
April House-Beck
George Hughes
Erica Johnson
Nicole Lange
Kathryn Mamula
Timothy Mccoy
Josie Monahan
Bev Williamson

5+ years of service

Sarah Anzalone
Peter Baako
Chatyra Basey
Meghan Berndsen
Elaine Billow
Kristina Bower
Sonya Brown
Kate Burkhardt
Kelsi Burkhardt
Rayshaunda Byrd
Tammy Campbell
Sharita Carlton
Shameka Clark
John Colegrove
Ruby Coleman
Katrina Collins
Eric Cummins
Monica Farley
Rebecca Fowler
Marie Green
Patricia Hawkins-Burley
Keyta Hoffmann
Vanessa Horton-Cash
Tammy Ikirt
Andrey Jackson
Katherine Jaeger
Greer King

Dennis Ksycki
Jessica Kuhlman
Cynthia Lindsay
Paul Linser
Nancy Martin
Cody Meade
Cynthia Metz
Keena Naylor
Kristina Porter
Kimberly Rehage
Deborah Reolon
Adam Reynolds
Joseph Rieman
Matthew Sedziol
Kaela Simpson
Aretha Sims
Stephanie Smith
Lendsey Smith-Webb
Esther Vazquez
Chris Vermillion
Kendra Watkins
Clarence Whitaker
Shabria Wilson
Regina Woodson



EMPLOYEE RECOGNITION

Heart & Hope Awards

NewPath Child & Family Solutions excitedly announces Diane King and Jade Blanton as recipients of the 2021 Heart & Hope Award. NewPath presents this exclusive peer-nominated award to team members who continue adapting to clients' needs and consistently live out our **Guiding Principles**. These principles include

Empowerment, Empathy, Creativity, Determination, and Collaboration. Both Diane and Jade go above and beyond for their teams, clients, and NewPath as a whole. They are both passionate about their work and lead by example to ensure that NewPath remains a place of hope and healing.



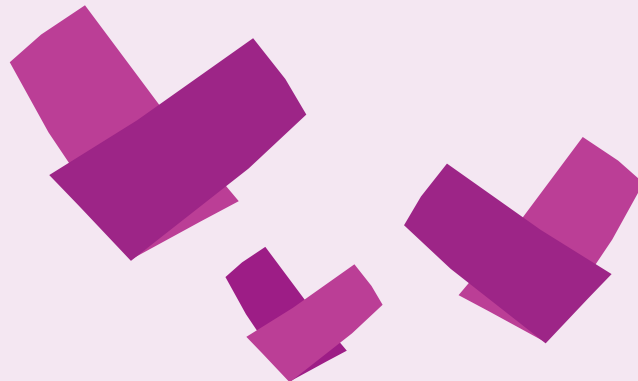
JADE

Jade Blanton, Admissions Coordinator, has worked with NewPath for four years. She currently oversees all admissions and discharges for our Residential Program. Always willing to help out, Jade assists with case manager transport and appointments as well as helping out in residential units when needed. Jade is passionate about her work and sees her role as more than a job but a way to help children grow and be successful.



DIANE

Diane King, Data & EHR Manager, has served as a NewPath Team Member for over 25 years. Diane currently supports the organization by collecting, analyzing, and publishing data meaningfully. Diane believes in the power of data to influence decisions, guide strategy, and produce more significant outcomes. Diane sets the foundation our frontline team members use to support our clients' growth by working hard behind the scenes every day.



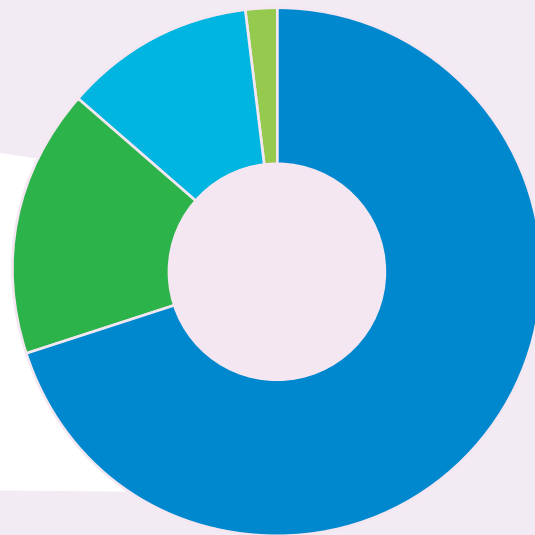
FINANCIALS

FY21 Operating Budget

\$23,654,167

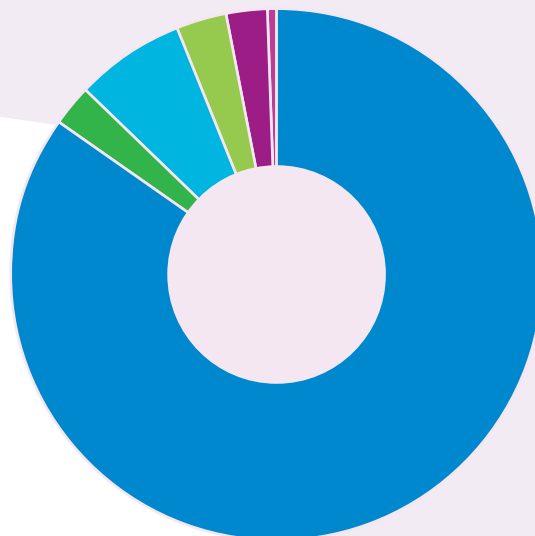
EXPENSES

Program Personnel	70.1%
Program Expenses	16.5%
Administrative	11.5%
Development/ Community Relations	1.9%



REVENUE

Program Fees	84.8%
Investment	2.5%
Miscellaneous Income	6.8%
Grants	3.1%
Contributions/ Donations	2.4%
United Way	0.42%



WHY WE GIVE

Creativity — Finding New Ways to Help Others

Rhonda Laney exemplifies our Guiding Principle of Creativity. She has found new and innovative ways to support NewPath, our clients, and our mission. Rhonda has been a generous partner of NewPath for nearly 11 years. Each year she and a group of friends provide holiday gifts to NewPath's clients in Residential Intervention Services. Rhonda also created a birthday card writing program and played an integral role in developing our Welcome Center located at NewPath East. "At the end of the day, these kids just want someone to spend time with them and make them feel loved." — *Rhonda L.*

Collaboration — Working Together to Change Lives

Jeff Rosa embodies our Guiding Principle of Collaboration. In partnership with his friends, family, and NewPath's Development Department, Jeff organizes a holiday party each year for all NewPath clients enrolled in Residential Intervention Services and Independent Living Services. This 21-year legacy has provided endless fun, hot meals, and true holiday joy to hundreds of kids who, in many cases, wouldn't have the opportunity to celebrate at all. "These kids find such happiness not just from getting gifts off a list, but that someone took the time to find it for them." — *Jeff R.*

Empathy — Serving Others through Understanding

Dan Russell personifies our Guiding Principle of Empathy. He understands what the children and families whom NewPath supports go through because Dan's father was an orphan. Raised with prioritizing the service of others, Dan has partnered with NewPath for many years through charitable contributions and volunteerism. NewPath, a former orphanage currently continuing the mission of helping youth in need, has a special connection to Dan's father, family, and, most importantly, himself.

Empowerment — Igniting Hope and Positively Impacting Lives

Dave and Amy Deger epitomize our Guiding Principle of Empowerment. Dave and Amy's connection to NewPath began fifty years ago. Amy's mother was a volunteer at NewPath West (then St. Joseph Orphanage Villa). Growing up volunteering to help children and families in need instilled a lifelong mission of positively impacting others' lives in Amy. Dave has been a Board of Directors member for several years. He currently serves on the Development Committee and will soon move to the Building Committee. "We place NewPath so high on our giving of time, treasure, and talent because we positively change people's lives in need, the size, and the organization's strength." — *Dave D.*

Determination — Refusing to Give Up on Making a Difference

NewPath has refused to give up on our mission of being the premier behavioral health, specialized education, and child welfare agency in Cincinnati for over 190 years. Every program and service offers our clients and their families the opportunity for positive change, every care plan improves lives and every NewPath Team Member ignites hope, one success story at a time. We can't accomplish this alone. Join us by investing in your community and bringing hope and healing to children and families recovering from trauma.

OUR DONORS

The following listing of donors is representative of donations from January 1, 2021 through February 22, 2022.

\$10,000+

Butler County United Way
 CareSource Foundation
 Chemed Foundation
 David and Amy Deger
 Difference Makers Legacy Fund
 Tom and Mary Beth Donelan
 Leo And Laura Duwel Memorial Fund
 ESI Electrical Contractors
 Federal Communications Commission
 Henry and Elaine Fischer
 James Gielty
 Ed & Joann Hubert Family Foundation Inc.
 Ohio Department of Mental Health and Addiction Services
 Ohio Department of Youth Services
 Daniel and Susan Pfau Foundation
 John A. Schroth Family Charitable Trust
 Sisters of Charity of Cincinnati
 Ticket to Dream Foundation
 United Way of Greater Cincinnati

Miamitown Veterinary Services LLC
 Douglas and Mary Ann Newman School Outfitters
 Staffmark
 Tim and Barbara Stefl
 Betty Tonne
 United Way Metro Chicago
 United Way of Greater Atlanta
 Western & Southern Financial Fund

\$2,501 – \$5,000

Helen E. Allen Charitable Foundation
 Matt and Kellie Barter
 Stella M. Buerger Trust
 Butler County Family & Children First Council
 Cincinnati Children's Hospital Medical Center
 Jennifer Creamer
 Michael and Laura Dailey
 Gary Denney
 Emery Oleochemicals
 Jack Esselman
 Jason Kaster
 Kroger Community Rewards
 George Kurz
 Joe and Mary Luria
 Regina Marek
 John and Minerva Mason
 MDU Resources Foundation
 Molly North
 O.C.C.R.R.A
 Don and Mary Lee Olinger
 Don Petersman
 PROAMPAC Cincinnati
 Rhonda Ranney
 James and Kathy Redmond
 Nicholas and Katherine Reilly
 Kathleen Bryant and Jeff Rosa
 Mireilly Ann Rosado-Bonilla
 William Ryan
 SAF Holland Inc.
 Christopher and Kimberley Speed
 Richard Steffer
 Ticket to Dream Foundation (Mattress Firm)
 University of Cincinnati Medical Center — MICU
 Wohlgemuth Herschede Foundation

\$1,001 – \$2,500

9United
 American Dawgs
 Scott Anderson
 Mary Baer
 Beamer's Piggyback
 Jeff and Laura Branca
 David and Mary Brothers
 Cincinnati Public Schools Facilities Employees
 Citygate Church
 Gina Crowley
 Eric Cummins
 Cora Dronet
 Ray and Tanya Dronet
 Joe Fadrigio
 GE Foundation
 Frankie Gentry
 Judy Gerdson
 Greater Cincinnati BMW Motorcycle Club
 William and Teresa Gregg
 Ted and Mary Haglage
 Warren and Bernice Hensel Foundation
 John and Kimberly How
 Anthony Iori
 Johnson & Johnson
 George and Marjorie Kaminsky
 Norman and Tara Khoury
 Jonathan Koopman
 Jay and Patty Kurtz
 Jim and Mary Lazzari
 Michael McAlpin
 McCluskey Real Estate Group
 Blake McCoy
 Tom McHugh
 Tim and Cathy McMahan
 Paul Miklavcic
 Millwright Pile Drivers Local 1090
 Drew and Carol Morgan
 William and Janet O'Callaghan
 Loretta Pellerano
 Ann Petersman
 Aric and Paige Platt
 PNC Bank
 Janice and Kevin Redmond
 Michael and Barbara Ricke
 Tony and Sally Rieman
 Michael and Janette Rolcik
 Mark and Susan Rummmler

Daniel and Mary Scheid
 Mary Schweitzer
 St. Margaret of York School
 Standex Electronics
 Russell Stokes
 Greg and Lori Tankersley
 Daniel Taylor
 TDL Tool
 William and Amy Thaman
 Bobby and Carleen Thompson
 Thomas and Mary Uhl
 United Food and Commercial Workers Union Local 75
 United Way of Greater St. Louis
 United Way of Southwestern Pennsylvania
 US Bank
 Patrick and Carole Ward
 David Westrich
 Kranthi Yellugari

\$501 – \$1,000

Donald and Lynne Able
 AmazonSmile
 Kevin Atkinson
 Bahmann Foundation
 James and Julia Beckett
 Tyler Benedict
 Harry Blaney
 Doug Blankenship
 William Bowman
 Russ Bradley
 Vicki and Richard Brashear
 Scott Buchanan
 George & Mary Jo Budig Family Foundation
 W. Alan Burke
 Kelly Byrd
 Mike Castillo
 Charities Aid Foundation of America
 Brandon Christin
 Cincinnati Bell
 Comfort Systems USA, Ohio
 Darren and Aimee Cordrey
 Rita Driehaus
 Sister Mary Catherine Faller, SC
 Ray Faulkner
 John and Biruta Flynn
 GE Aviation-ACSC
 Edward and Jody George
 Graydon

EMPOWERMENT

Every client can succeed and we are partners and guides on their journey to healing.

\$5,001 – \$10,000

William Cox
 Troy and Lauren Davidson
 Robert and Lisa Dorsey
 Raymond and Carolyn Eisenschmidt
 GiveSmart US, Inc.
 Greater Cincinnati Foundation
 Robert and Ann Hartlaub
 John Kadas
 Bill and Caren Laverty
 Live Nation Worldwide, Inc.
 Loring Family Foundation

Greater Twin Cities United Way
 Steve and Kathy Groh
 Steven and Mary Hendy
 Jeffrey and Karen Hock
 Horan Associates, Inc.
 William and Sharon Iles
 Carmine Iorio
 IT XCEL Consulting, LLC
 Johnson & Johnson Foundation
 Kara Jones
 Brian Jostworth
 Dale and Pamela LaHue
 LaSalle High School
 Frances and Cynthia Lehan
 Nick and Jennifer Lien
 LSI Industries
 Craig and Alice Lubetich
 Tom and Lorie MacDonald
 Cathie Marshall
 Holly McLeod
 Scott McNelis
 Mt. Washington Presbyterian
 Church
 Nation Kitchen and Bar
 Jerry and Janet Nieb
 Bruce and Constance O'Leary
 Baffour and Toni Otchere
 Kelly Ottman
 Planes Moving and Storage
 Pledgeling Foundation
 Gregory Rasp
 David Rosselot
 Stephen and Julie Schmitz
 Brian Schweder
 Jennifer Sherwood
 Gina Smith
 Michael and Catrina Spicer
 St. Jude School
 Joseph Stross
 Lisa Taylor
 Alex and Lura Teass
 Judd and Angie Tressler
 United Way of Greater
 Milwaukee & Waukesha County
 United Way of Northeast Florida
 US Bank Foundation
 Brianne and Daniel Waugh
 John and Teresa Wheeler
 Stephen and Melanie Wright
 Patti Wuennemann
 Cathy Wyatt
 Paul Young

\$251 – \$500

Julie Abbott
 Rita Agunobi
 Herbert Ahting
 Paul Anthony
 Robert and Gloria Archer
 Denene Asemota
 Ahmed Ashraf
 Nawal Baqai
 Sandra Barkey
 Evette Bentley
 Richard Berish
 Michelle Blake
 Gilbert and Carol Ann Born
 Christopher Brafford
 Michael and Ann Braun
 Thomas and Christine Brinkman
 Daniel and Anne Burke
 Albert Cash
 Cemex Materials LLC
 Stephen and Mary Jo Clear
 Joseph and Stephanie Coffaro
 David and Lori Couchot
 M. Thomas Dalton
 Carla Davis
 Derringer Company
 Katy Dettinger
 Eco Engineering, Inc.
 Nicholas Elias
 Shannon Ellingson
 Fidelity Charitable
 Nick Fucito
 Steve and Connie Fulton
 Kathleen Gates
 Thomas Grimm
 Bryan Grover
 Michael Habel
 Barbara Hammersmith
 Jacquelyn Harris
 Bruce and Melanie Healey
 Martin and Mary Heineke
 Guy Hinton
 Phil and Gloria Hock
 Julie Hoh
 Jeff Honious
 Matt Jenkins
 David and Cynthia Kaiser
 Kevin and Martha Kane
 Kristi Kappes
 Ellen Kellogg
 James and Mary Sue Koenig

Patricia Koss
 Mark Krause
 Leonard Kristof
 Kelly Kuhn
 Werner and Sue Kummerle
 Stephanie Kyle
 Landman Corsi Ballaine & Ford P.C.
 Ray Lapre
 Cara and Mark Larosa
 Kristina Prewit Lincks
 Patty Malin
 Stephen and Lisa Marek
 Charles and Claire Martini
 Todd May
 James McGuirk
 Dr. Muhammad Meatchem
 Ted and Ashley Merianos
 Greg Meyer
 Roger and Mary Ann Meyer
 Dan and Melissa Miltner
 Cheryl and Michael Molnar
 Dennis and Gail Murray
 Jeem Newland
 Duylinh Nguyen
 Brent Niese
 Norbert Ober
 Arunkumar F. Patel, MD
 Amy Pflum
 Procter & Gamble —
 Corporate Office
 Angela Register
 Edward and Peggy Reilly
 Rhinegeist Brewery
 Jacquelyn Roberto
 Robert and Sanae Rolf
 Marren and Sharon Rue
 Robert and Margaret Ruffing
 Harold and Patricia Scharf
 Lee and Molly Schierloh
 Ian Schmidt
 Richard and Pamela Schwartz
 Edward and Maryann Schwegman
 Gail and John Sheppard
 John Sliner
 Stanley Smith
 Society of the Transfiguration
 Joshua Stacy
 Joseph and Susan Stevens
 Stewart Title Company
 Andy and Lori Stroehlein
 Brian and Janet Sullivan

EMPATHY

Every story is unique
 and we meet clients
 where they are.

Mark and Stephanie Thaman
 Margaret Thompson
 Robert and Linda Toepfer
 Trinity 163
 Patrick Vaughan
 Aspi Wadia
 Archie and Sandy Wilson
 Roger Wilson
 Worldwide Equipment of Ohio, Inc.

\$101 – \$250

Randy Adkins
 Dietmar and Teresa Amelang
 Arthur's Cafe
 B.J. Meyer Sons Funeral Home
 RoseAnn Barone-Wirth
 Rashmi Batte
 Harry Blanton
 Sandra Bostic-Frye
 Emily Boswell
 Rachel and Michael Bruner
 Rhennea Buck
 David and Elizabeth Buschle
 Mary Buse
 Nancy Calarco
 Jean Cate
 Patrick Clark
 Rob and Donna Cohen
 Colen and Kimberly Cromer
 Frances D'Arcangelis
 DAJ Tax and Accounting Services
 LLC
 Dale and Kathy Davis
 Matt Dierkers
 Kayane Dingilian
 Bob and Arlene Doerger
 David Dressler
 James and Ann Dunlevy
 Jeffrey Ellis
 David Eversole
 Gary and Jenny Fay

OUR DONORS *continued*

CREATIVITY

Our clients deserve a unique approach and we are continuously investigating new approaches and solutions.

Kody Gastaldo
Michael Geers
Brian and Joelle Gilbert
Gary and Vicki Gilbert
Gary and Catherine Gochoel
Roberta Goewey
Tonya Guy-Green
Vince Hartmann
Russell and Melinda Heil
Heile Family Fund of the Bank of America Charitable Gift Fund
Mary Jo and Thomas Heintz
Andrea N. Hick, Attorney At Law
Ann and Jack Hoffman
Norb and Jane Holtgrewe
Gilmara Horsth
Donna Houseman
Dustin Howe
Thomas and Darlene Jagodzinski
John and Antonella Jemail
Jones Family
Blaize and Nanci Kah
Alvin and Evelyn Kammer
Judy Kettlewell
Lawrence and Patricia Kluener
Scott Knox
Maxim Kovalyov
Holly Kozlowski
Rishikesh Kulkarni
Lynn Lape
Janine Lawrence
Mark Lewis
Alexandra Lion
Amanda Listermann
Amy Luce
Madison Design
Amy Mays
Merche-Solutions
Greg and Joann Merk
Thomas and Lisa Mettey
Robert and Martha Metz

Robert and Maureen Metz
Leah Miller
James Minium
James Moorman
Dave Moravec
Britto Moses
Ikenna Muoka
Jim Murray
Thomas and Marguerite Murtaugh
NPA Realty Group
Bill O'Brien
Carole Orth
Scott and Susan Osborn
Henrietta Ossai
Roberta and Theresa Padur
Pay It Forward Cincinnati
Amy and Sally Perry
LaRosa's Pizzeria
Kevin and Judith Raker
Edward and Karen Rathman
Dennis and Kathleen Riehle
John and Margaret Roedel
George and Mary Rolfes
Michael Rolfes
Priya and David Rolfes
Brenda Ruffner
Lori Ryan
Chuck and Jan Sanford
Janie and Tom Schaefer
Schmerge Exec. Planning Services, Inc
Sandra Schwartz
Patrick and Joann Sedgwick
Barry Smyth
Southern Ohio Bikers Community Aide Fund
Paul and Nancy Stockhauser
La Donna Storer
Shawn Stovall
Eileen Sullivan
Fred and Gloria Taphorn
Mark and Mary Thiel
Cynthia Turner
United Way of Greater Philadelphia and Southern New Jersey
Unity Christian Church
Diana Veid
James and Dinah Walker
Tim and Lisa Wanstrath
Melvin Warren

Penny Wartman-Masten
Monica Weakley
Thomas and Marcia Webb
Donald and Sandra Weinkam
Bernard Wilger
Roger and Elizabeth Wilson
Kelly Wittich
Mike and Denise Zins
Christina Zmrazek

\$51 – \$100

AFSCME Local 223 Ohio Council 8
Elvire Ahouangbe
Nadia Ailoje
Alworth Financial
Paul and Mary Betz
Manisha Bhagwat
Sharon Blake
Donna Bleh
Jerry and Jennifer Boeckman
Cathryn and Frank Brice Jr.
Robert and Renee Bross
Lorryn Bruns
Louann Buckley
Robert and Donna Bushman
D. Page Busken
Ernie and Vicki Carrier
Lydia Clark
James and Anita Comarata
Catherine Conniff
Robert and Rita Costantino
Paul Cummins
Stephen Cunningham
Peter and Lisa Dayton
Devin Dean
Paul and Diane Dehler
Ed and Patricia Deters
Denise Donnelly
Ronald Enderle
Engineered Material Handling
Glenn and Debbie Fardy
Deborah and James Farley
Sharon Farr
Donald and Mary Farwick
John and Tonya First
Mary Ann French
David Galehouse
Debi Gerbus
Terrance and Gayle Gittinger
Good News Church of God in Christ

Michael Grever
Donald and Debbie Haap
Wren Hanson
Jane Hatter
Joseph and Charlene Hatton
Patricia Hayden
Donald and Megan Heeb
Dave and Heidi Heinrich
Christina Herrick
Rebecca and Greg Hill
Shirley Hoffman and Vicki Campbell
Mike and Robin Hummel
Michael and Shelva Jacobs
Phillip Janson
Nancy and Roger Johannigman
Marion Johannigman
David Johnson
Frank and Kathleen Kane
Mary Kapraszewski
Shashank and Christeen Kelkar
Kilmat Master Pools
Jean and Thomas Kollmann
Leonard Kuntz
Michael and Carla Kursell
Neil and Melanie Larrance
Herbert Lehan
Beverly LeRoy
Robert and Joan Lohrey
Kara Luggen
Nancy Martin
John and Judith Martin
Sylvia Maurer
Joseph and Eleanor McSwiggin
Joseph Melchi
Ronald and Jeanna Merkhofer
Rebecca Meuche
Greg Meyer
Francis and Janice Miller
Kelly Millikin
Deepak Minocha
Tricia and Scott Mullins
Donna Murray
Tammy Musolino
Teresa Mussio
Andrew Nurre
John and Kelley O'Lone
Gerry and Sue Oaks
Jason and Janet Ober
Angela and Kennan Oleary
Thomas and Beverly Olthaus

Carol Osterman
Elizabeth Ott
Joseph Palazzolo
Karen Paul
Frank and Helen Pulsfort
Armando Rafael
Halle Raicevich
Michael and Sylvia Ramsey
Norbert and Mary Ranz
Rebecca Renfrow
Edwin and Carole Rigaud
Fredric Robbins
Stephanie Roberto
Ron and Rosemary Rooker
Vivian Rust
Kenneth and Joann Sanders
Doug and Julie Sayers
Robert Schell
James Schlachter
James and Nancy Schmidt
Kenneth and Kimberly Schmidt
Richard and Jo Ann Schreiber
Greg Schrenker
Martin and Barbara Sexton
Grace Sferra
Sisters of St. Francis Bequest Fund
Michael Stanis
Janet and Christopher Stenger
Cathryn Tepe
Kitenge Tshomba
Debbie Tully
United Way of East Central Iowa
United Way of West Central
Connecticut, Inc.
United Way Worldwide
Thomas and Donna Vale
Kendra Vincenty
Stephen and Donna Wagner
Amber Watts
Jerome and Ingrid Weber
Richard and Christine Wheeler
Kenneth White
Donald and Carole Willen
Marsha Williams
Beverly Williamson
Jerry and Suzanne Williston
Laurie and James Winkler
Priscilla Wood-Byer
Andrew Wuhrasizer
Jerome and Donna Ziegler

\$26 – \$50

Nastaran Atashbazi
Sue and Barry Auer
Frank and Deborah Barberio
Jackie and Shayne Bateman
David Beckett
Virginia Bernloehr
Paul Bertrams
Catherine Bessler
Henry and Sandra Boesing III
Colleen Borgia
Cindy and Denny Bosse
Eileen Boyd
LouAnn Brady
Angela Brandt
Mark and Pam Braunstein
Cherylann Thomas Bredestege
David and Karen Bulman
Janice Burns
Wilma Busken
Howard and Diane Butler
Butler County Common Pleas
Court Judges General Division
Ruben and Leticia Cabrera
Robert and Barbara Cahill
Lisa and Glenn Caminiti
Joseph Carolin and Amy Heisel
Barb and Bill Carrelli
Cascabel Creations
Jason Conway
Jack and Mary Crachiolo
Capt. Patrick Day
Terry Deere
Rose and James Dickman
Anna Dowell
Michael and Carolyn Dowling
Christina Eison
Othuke Emede
Catherine Faillace
Mary Lou Field
John and Victoria Foertsch
Christine Frank
Barbara Frederick
Lynn Geiger
Marie Gemmell
Lawrence and Luanne Gibboney Jr.
Lou Ann Giedlinski
Kevin and Molly Gilbert
John and Nancy Glennon
Pete Grimes

Tonya Harris
Evelyn Heidel
Greg Hemberger
Marilyn Herrmann
Michael Hertsenberg
Wayne and Barbara Hilson
Michelle Hines
Julia and Robert Honkomp
Shannon Hughes
Sadiq Inuwa
Priestly and Carolyn Johnson
Veeramani Karuppuchamy
Roger and Myra Kathmann
Louis Knolle
Barbara Koch
Connie Kopp
Paul and Mary Kremer
Jeffery Blanton and Angela Kroger
Mary Jo Lattarulo
Allen Leach
Julie LeRoy
Hsiao Shan Lin
Keith Lobring
Margie and James Maltry
David Marek
Sally May
Mike Mays
Kimberly and Frank Mazzei
Timothy McGrath
Mary McMahan
Brittany and Zach Meyer
Charles and Connie Mitts
Ralph and Constance Moeller
Christopher and Jeanne Muia
John and Mary Mushaben
Linda Newsom
Lisa Niehaus
Alice Noonan
Jerry Nordman
Darla and Michael Ober
George Oestreich
Natalie and Lawrence Ollendick
Tom and Mary Beth Ottke
Charles and Carolyn Owens
John Palazzolo
George and Mary Katherine
Pearson
Normarys Perez-Linn
Kiara Peterson
Lynne Piepmeyer

Gary Ploehs
Plumbers, Pipefitters & Mech.
Equip. Serv.
Dale and Patricia Prairie
PRP Women's Association
Shirley and Gerald Quatman
Rick and Virginia Rave
Kelli Rice
Debra Ruhe
Michael Schaad
Karen and Joseph Schreibeis
Stephen Schulte
Seligman Distributing Co.
Matt Shamp
Donna Steffen
Michael Stewart
Stanley and Claudia Streeter
James and Gertrude Stross
Karen and Lawrence Sutthoff
Carolyn and Joseph Theis
Frannie Thompson
Healthier and Joel Tomlin
Sarah Trombetta
United Way of Central Ohio
Joe Weber
Nancy White
Betty Wolfe
Nur Hani Zainal

DETERMINATION

We believe in our clients and their families, refusing to give up in the face of challenges.

\$1 – \$25

Ernest Abitih
Ryan Acomb
Charles Agunobi
Jack and Mary Ansara
Caitlin Bainter
Jacqueline Battle
Angela Blackham
Judith Bozile
John and Linda Brandenburg
Cesare and Mary Briccio

OUR DONORS *continued*

Rebecca Brown
Judith and Donald Bruno
Stephanie Burnside
Camargo Cadillac
Johanne Cantave
Charles Agunobi
Phyllis Ciaccio
Chase Cockrell
Diane Cornelius
Anne Crowley
Shanel Dean
Lisa Dellecave
Brigid Des-Ogugua
Brandy Desenberg
Alexis Deutsch
Tammy Deutsch
Kathleen and Ray Ebbeler
Rose Fern
Sheila and Mathias Foltyn
Colleen Foulks
Fricke Family
Donald Fries
Jane Fuegner
Mamie Goodwin
Mother Margaret Hall
Alida Hart
Laura Hilger

COLLABORATION

We believe in collaborative approaches for holistic care, involving a team of treatment providers, family and community members, and our clients.

Gary Hilvert
Jack and Barb Horner
Chris House and April House-Beck
Andrea Jackson
William Jackson
Jacopri INC
James Johannigman
Linda Johnson
Robert and Virginia Johnson
Stephanie Jones
Steven and Barbara Jones
JPMorgan Chase

Jenny Keeton
Sandy Keith
Sarah Kennedy
Jean Kessler
Treva Lambing
Mary Lynn and Greg Langenbrunner
Vicki Lee
Robert and Linda Lehrter
John Losekamp
Tommy and Megan Mann
Sam Mauro
Tim McCoy
Tara Meyer
Foziyeh Mohammadian
Robin and Brett Moore
Carin Moore
Dennis Murray and Megan Sparks
Roger and Shirley Musil
Network for Good
John and Theresa Nimeskern
Anjan Parikh
John Parran
Kelly Patterson
Kristina Pfaffinger
Meera Popkin-Tarack
Tim Race
Sandra Rider
Carmen and Julie Roser
Robert Scheck
Mark and Virginia Schnieber
Monica Schubert
David Schultz
David Sedei
Nicole Sevier
Ali Shea
Logan Shinkle
Shriganesh Shintre
Eric Simons
Ingrid Smith
Ronald and Kay Spiess
Kathleen and Gary Stiens
Ruo Chen Tang
David Tashjian and Alicia Rosselot
Kitty Tierney
Tim Trame
Triangle Fastener Corporation
Carolyn Ungruhe
Larry and Donna Vollner
Laura and Susan Vonderhaar
Thomas Wagner

Matt Waitt
David Wright
Beth York
Johnny Yost

Gift In Kind

Eman Abualwafa
Debra Adams
Ralph and Debbie Adams
Rhea Adriatico
Diane Adrignola
Aladdin's Eatery
Allworth Financial
Alpha Phi Omega at Miami University
Rick Anderson
Archer Daniels Midland Company
Ashley Arthur
Shanki Arulmani
Aston Oaks Golf Club
Avalon at the Pointe
Alan Barth
Derek Baxter
Todd Beekman
Gabriel Behan
Bell Dental Group
Cathy Bernardino- Bailey
Jennifer Berube
Best Buy - Western Hills
Balena Blaylock
Denise Blint
Patrice Blue
Geri Blust
Franci Boatright
Michael and Julie Bogenschutz
Brain Brew Custom Whiskey
Beverly Bredenfoerder
Corrinne Brown
Maria Brown
Janice Brueckner
Hilary Oliver Burrows
Adam Busch
Corrine Camero
Sergio Campos Jr
Brett Canter
Sierra Carey
Sandy Carlson
Danielle Carter
George Castleberry
Chipotle Mexican Grill, Inc.
Chea Chum

Church of Jesus Christ of Latter Day Saints
Cincinnati Bengals, Inc.
Cincinnati Central Turners Auxiliary
Cincinnati Circus School
Celine Collins
Tyler Colwell
ComicBooks For Kids!
Computer Systems Management
Yvonne Coursey
Brian Cox
Peggy Cox
Angie Cross
Bridget Crowley
Judith Crowley
D & D Real Estate Partners, LLP
Christy Daigle
Amy Davidson
Andrea Davis
Benjamin DeHart
Andrew Denman
Carman Dent
Kathryn DeVault
Macy Drinkhouse
Echo
David Eisenbaum
Elizabeth England
Beverly Engram
Jessica Faciszewski
Christopher Findley
Sarah Fleming
Kelly Flerlage
Nathan Flinders
Joshua Foley
Found At Home, LLC
Gail Fowler
Reynell Fraizer
Amy Gabbard
Diana Garcia
Alix Gasser
Dillon Gehle
Chenthil Giriraju
Daniel Golan
Celestine Goodloe
Laura Goodman
Erin Gorczyca
Sarah Gottschalk
Rebecca Graf
Graham Packaging
Alex Grantz

Clint Grizovic	Gail Mauk	Patty Sammons	Cindy Wendling
Tyler Hampton	Gail McCullom	Matthew Sanchez	Tom Westrich
Ellen Harding	Brian McDonald	Vicki Santhira	Ashley White
Matthew Hare	Bobbie Mechley	Mitch Scarff	Dharmika and Rohana Wijewardhana
Harrison Trail Health Campus	Mary Ann Merriman	Schaefer Inc	Rebekah Wilks
Gregory Harter	William Meyer	Ann Schmidt	Julie Williams
Curt Hathaway	Sofia Milazzo	Paul Schoettinger	Perry Williams
Betty Herald	Barbara Miller	Michelle Schroer	Jessica Wilson
Matthew Herzog	Karen Miller	Tom Schroth	Zachary Wilson
Cheryl Hickey	James Morris	Pete Schuster	Michelle Winters
Candi Hickman	Stephaine Morton	Emily Schwegman	Emily Wise
Judy Hines-Bailey	Dylan Motley	Jessica Schweinefus	Matthew Wolfe
Rachel Hock	Michele Muldoon	Martha Senerchia	Woodhouse Day Spa
Home Avenue First Church of God	Samantha Murphy	Susan Senn	Workout Anytime
Brian Hook	National Access Design	Lauren Shelton	Sahiti Yarlagadda
Hooked on Comics	Jason and Hannah Neises	Kamille Shepard	Holly Young
Melanie Hunley	New Hope Baptist Church — Stitchers Mission Ministry	Robert Siemer	Heather Younker
Courtney Huntsman	Lillie Newberry	Amy Smith	
IBEW Local 1347	Travis Newcomb	Chris Smith	
Emily Ann Imfeld	Lindsay Nichols	Snow Trails Ski Resort	
Pamela Innis	Nonstop Gaming	Angela Snowman	
Innova Games	Northwest Community Presbyterian Church	Johnathan Spieser	
Andrew Jacobs	Megan O'Brien	Sue Spohr	
Julie Jacobson-Ruby	Jonathan Odom	Amy Spradlin	
Jani-King	Paul Orme	Mary Springs	
Tyler Jew	Marcela Ortega-Walker	St. James Cub Scouts — Pack 24	
Ben Johnson	Silvienne Overpeck	Melissa Steimle	
Brandon Jones	Wanda Owens	Austin Steiner	
Dorothy Kahle	Teresa Pardieck	Tracy Stiles	
Amareswari Kanuparthi	Bryan Patterson	Lauren Stockton	
Katie Schneider Photography	PEDCO E & A Services	Donna Storey	
Ryan Kean	Deborah Picchione	Jade Streitman	
Frank Kerley	Erin Prewitt	Paulette Sulfridge	
Barbara Kippenbrock	Maura Prince	Gwen Summers	
Timothy Kiser	Diane Ramirez	Steven Tate	
Victoria Koch	Peter Rasche	Bryan Tenhundfeld	
Vicki Kolb	Michael Reed	Gregory Tepe II	
Sarah Krieghauser	David Reeve	The WEB Extreme Entertainment	
Josiah Kuha	George Rewick	Ms. Delores Thomas	
Tiffany LaCour	Bettie Reynolds	Jon Threnhauser	
Todd LaDue	Jim and Karen Reynolds	Mia Todd	
Denise Laible	Allie Rice	Brooke VanHoene	
David LaPine	Max Rivkin	Cindy Vincent	
Larosa's White Oak	Robert Rothschild Farm	Cari Voor	
Chad Levins	Doris Rogers	W.P. Dolle, LLC	
John Linton	Allison Rollins	Michael Walsh	
Lory Livezey	Malaika Rudolph	Beth Walsman	
Sherri Louiso	Sacred Heart of Jesus, Helping Hands	Maridonna Wamsley	
Ken Macke		Victoria Watt	
Srinivasa Maguluri		Taylor Weber	
Martha Martini		Mary Weekly	

SAVE THE DATE

Heart & Hope Gala

September 29, 2022 | 5:30 – 8 PM



NewPath
Child & Family Solutions
formerly St. Joseph Orphanage

LOCATIONS

Hamilton County — West

5400 Edalbert Drive
Cincinnati, OH 45239

Hamilton County — East

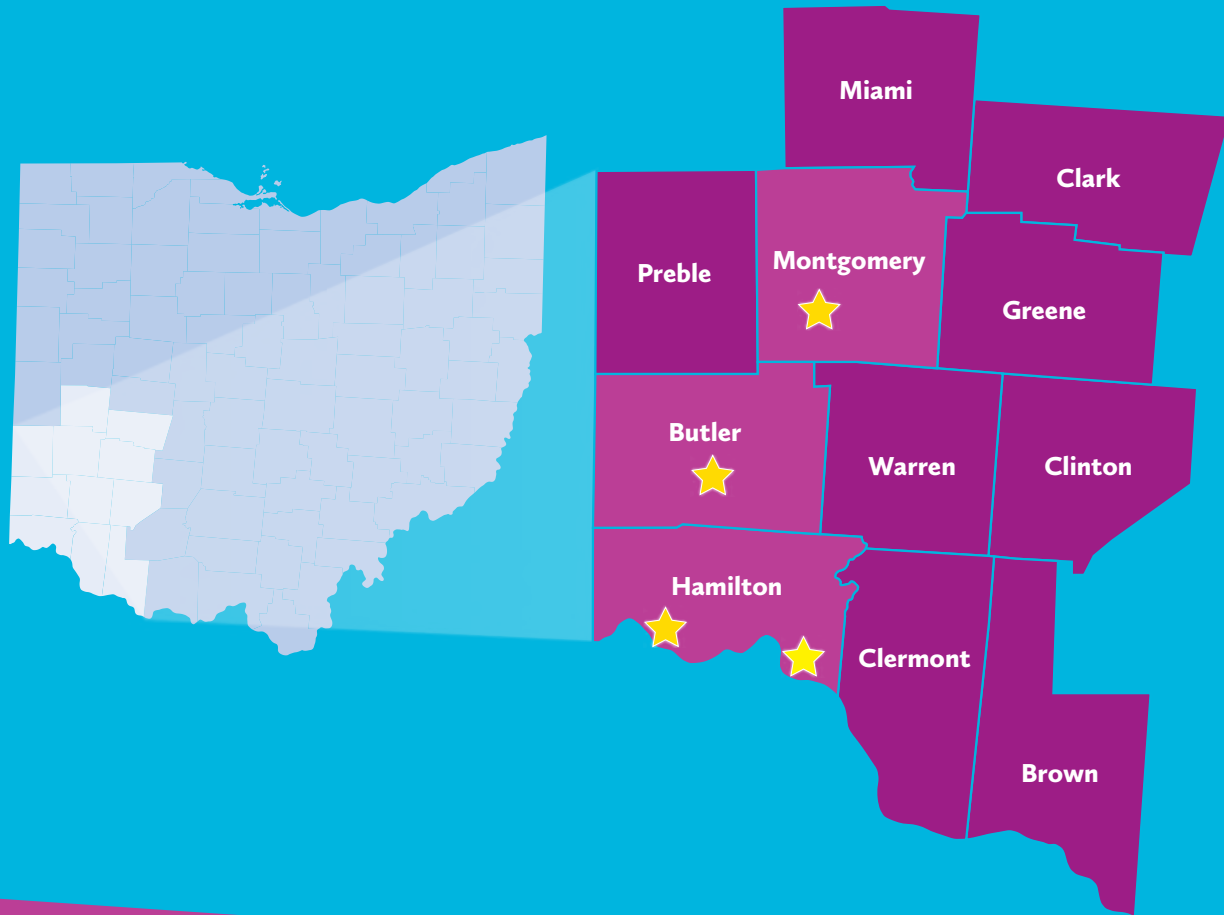
274 Sutton Road
Cincinnati, OH 45230

Butler County

6975 Dixie Highway
Fairfield, OH 45014

Montgomery County

6680 Poe Avenue, Suite 450
Dayton, OH 45414



FOLLOW US

 facebook.com/NewPathFamily/

 twitter.com/NewPathFamily

 instagram.com/newpathfamily_/

 linkedin.com/company/new-path-child-family-solutions/

 youtube.com/user/sjokids